



RP-3000XT

Personalize your RP-3000XT, Revision 2.x

Optional Supplementary Information

Alert boxes

The following alert boxes can be used in this publication:



“DANGER” indicates a hazardous situation which, if not avoided, will result in death or serious injury.



“WARNING” indicates a hazardous situation which, if not avoided, could result in death or serious injury.



“CAUTION”, used with the safety alert symbol, indicates a hazardous situation which, if not avoided, could result in minor or moderate injury.

NOTICE

“NOTICE” is used to address practices not related to personal injury.

IMPORTANT

“IMPORTANT” is used to address practices not related to personal injury.

Personnel



WARNING!
Hazards due to insufficiently qualified personnel!

If unqualified personnel perform work on or with the control unit hazards may arise which can cause serious injury and substantial damage to property.

- **Therefore, all work must only be carried out by appropriately qualified personnel.**

For further Product Support Options, Product Service Options, Returning Equipment for Repair, and/or Engineering Services please [download application note #37573](#).

Documentation itself

 **WARNING**

Read this entire application note and all other publications pertaining to the work to be performed before installing, operating, or servicing this equipment. Practice all plant and safety instructions and precautions.

Failure to follow instructions can cause personal injury and/or property damage!

Any unauthorized modifications to or use of this equipment outside its specified mechanical, electrical, or other operating limits may cause personal injury and/or property damage, including damage to the equipment.

Any such unauthorized modifications: constitute "misuse" and/or "negligence" within the meaning of the product warranty thereby excluding warranty coverage for any resulting damage, and invalidate product certifications or listings.

 **CAUTION**

This publication may have been revised or updated since this copy was produced. If the cover of the publication states "Translation of the Original Instructions", the original source may have been updated since this translation was made.

Be sure to check manual 26311, *Revision Status & Distribution Restrictions of Woodward Technical Publications*, to verify whether this translation is up to date. Always compare with the original for technical specifications and for proper and safe installation and operation procedures. To verify that you have the latest revision, check manual 26311, *Revision Status & Distribution Restrictions of Woodward Technical Publications*, on the publications page of the Woodward website:

www.woodward.com/publications

The latest version of most publications is available on the publications page. If your publication is not there, please contact your customer service representative to get the latest copy.

Table of Contents

Alert boxes.....	2
Personnel.....	2
Documentation itself	3
General.....	4
Preparation of the pictures for logo and bootup screen.....	4
Use the WW_Updater tool.....	5
Creating a 32-bit Bitmap.....	6

General

This document contains instructions that allows you to personalize your RP-3000XT, Release 2.x.

NOTICE

The procedure differs significantly from the predecessor, release 1.x

There are two areas that can be personalized.

- A splash screen (start screen) that runs on the display during boot-up (Standard: Woodward logo)
- A logo that appears on the top left section on the RP HOME screen (Standard: Woodward logo)

Follow the below steps for updating either one of these two files.

Preparation of the pictures for logo and bootup screen

Logo

You have to prepare the logo picture as a file:

- It shall be a *.png file.
- Its dimensions shall be 60*60 pixel
- Slight size variants are accepted, but there may be distortions in the shown view

Splash screen at bootup

You have to prepare the bootup screen as a file:


- It shall be a *.bmp file
- Dimensions **must be** 1024*600 pixel (width 1024, height 600)
- The bit depth **must be** 32-bit
- The picture shall be mirrored in the horizontal axis, like shown below

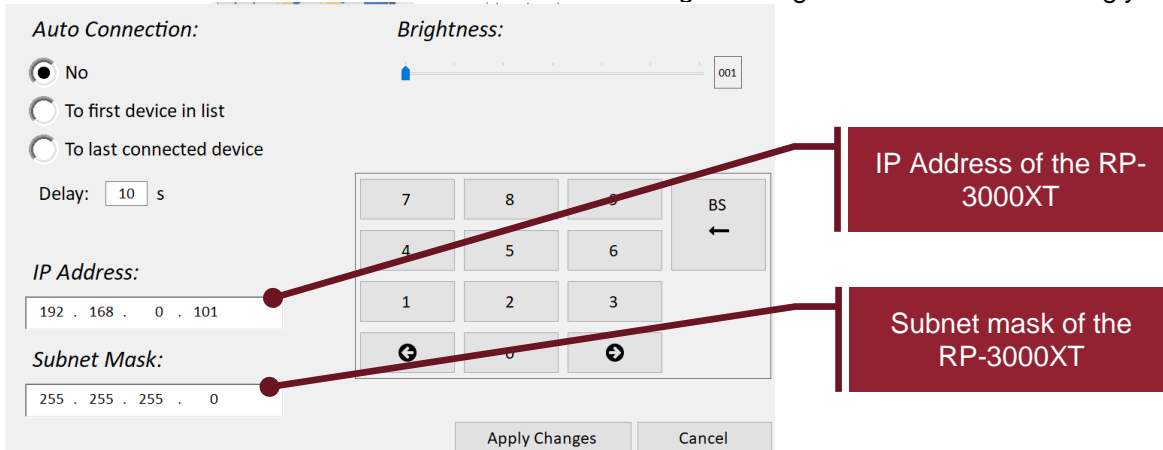


Use the WW_Updater tool

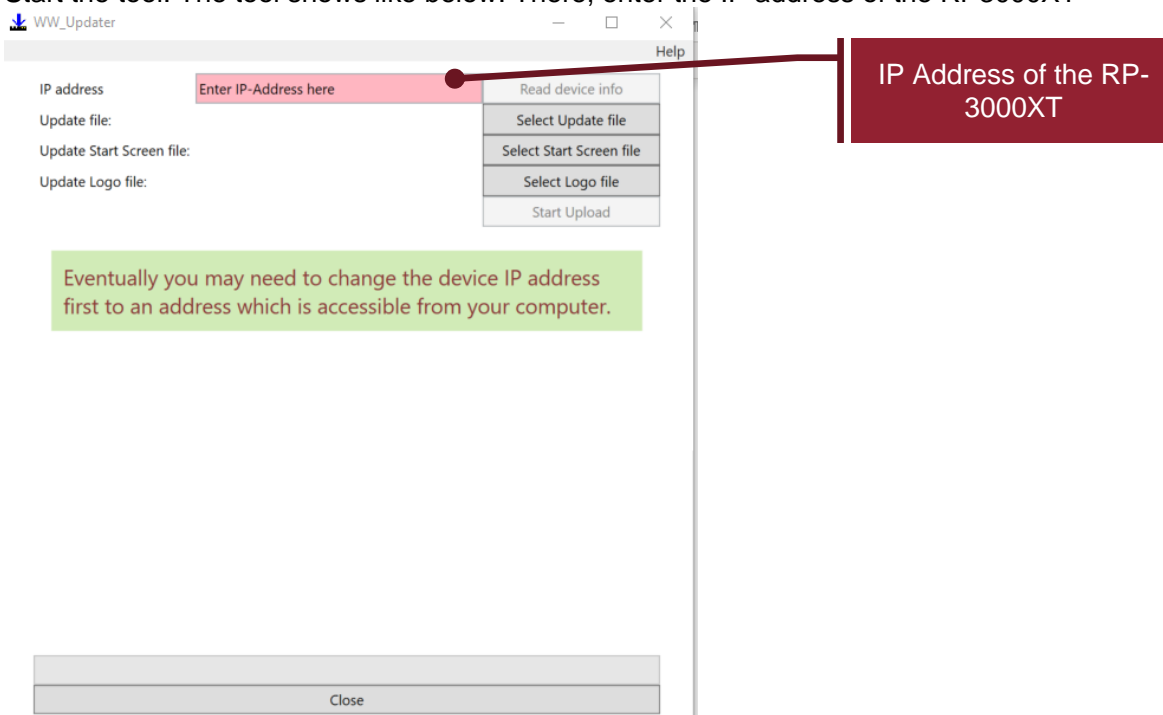
Woodward provides a PC tools for updating software and transferring logo and startup pictures to the RP-3000XT. It is called WW_Updater and can be uploaded from the [Woodward website](http://www.Woodward.com) . It is also available on www.Woodward.com under the part# **10-023-637**.

Upload procedure is:

Set up the network in the RP-3000XT. For that, go into the settings screen using the  button. Take care that the RP-3000XT's IP Address and Subnet Mask is set in a way that the mask is the same as in the PC and that the IP address is different but in the same range. Change these values accordingly.



Start the tool. The tool shows like below. There, enter the IP address of the RP3000XT



With "Read Device Info" it is now possible to verify that the **RP-3000XT** is connected and see its status. Then, with the buttons "Select Start Screen File" and "Select Logo File" you will be prompted for the respective file names.

When one of these files is selected, the "Start Upload" button gets active.

When the button is pressed, the tool will transfer one or both files to the **RP-3000XT**. The tool will after that automatically trigger a restart of the **RP-3000XT** and the pictures are then available.

NOTICE

This action overwrites the already existing pictures in the RP-3000XT. Woodward can provide the original ones on request.

NOTICE

Woodward RP-3000XT is always delivered with the standard firmware inside unless there exists a specific contract between the two parties. This personalization is user's responsibility and excludes Woodward for any warranty & liability claims arising thereof. For any repaired item, Woodward delivers it with standard firmware. The personalization may be added again by the user.

Creating a 32-bit Bitmap

The Standard tools coming with Windows like Paint do not save pictures as 32-bit bitmap, only as 24-bit bitmaps. But a 32-bit bitmap is required for the bootup screen.

- One alternative would be using Paint.Net, which is a freeware and supports 32-bit bitmaps. This also allows mirroring pictures.
- Another alternative would be online tools on the web which can automatically convert to this format. An example would be <https://online-converting.com/image/convert2bmp/> (Woodward takes no responsibility for the safety of this). So, create the picture in a format your tool supports and then, using such a web converter, convert it to 32-bit bitmap.

We appreciate your comments about the content of our publications.

Please send comments to: stgt-doc@woodward.com

Please reference publication 37929.

Homepage
www.woodward.com

**Woodward has company-owned plants, subsidiaries, and branches,
as well as authorized distributors and other authorized service and sales facilities throughout the world.
Complete address / phone / fax / email information for all locations is available on our website.**

THE INFORMATION CONTAINED IN THIS APPLICATION NOTE IS PROVIDED AS IS WITHOUT REPRESENTATIONS OR WARRANTIES OF ANY KIND EXPRESSED OR IMPLIED. THE ADHERENCE TO THE INFORMATION CONTAINED IN THIS APPLICATION NOTE SHALL BE AT THE USER'S OWN RISK. WOODWARD EXPRESSLY DISCLAIMS ANY REPRESENTATIONS OR WARRANTIES CONCERNING WHETHER THE DELIVERABLES, OR SOFTWARE WILL PRODUCE ANY SPECIFIC RESULT OR PERFORM ANY PARTICULAR FUNCTION. WOODWARD FURTHER EXPRESSLY DISCLAIMS ANY LIABILITY FOR DAMAGES, LOSSES, COSTS OR EXPENSES ARISING DIRECTLY OR INDIRECTLY FROM THE USE OF THIS APPLICATION NOTE, UNLESS WOODWARD HAS PROVABLY ACTED WITH WILLFUL MISCONDUCT OR GROSS NEGLIGENCE.

WOODWARD RESERVES THE RIGHT TO UPDATE ANY PORTION OF THIS PUBLICATION AT ANY TIME. INFORMATION PROVIDED BY WOODWARD IS BELIEVED TO BE CORRECT AND RELIABLE. HOWEVER, NO RESPONSIBILITY IS ASSUMED BY WOODWARD UNLESS OTHERWISE EXPRESSLY UNDERTAKEN.